

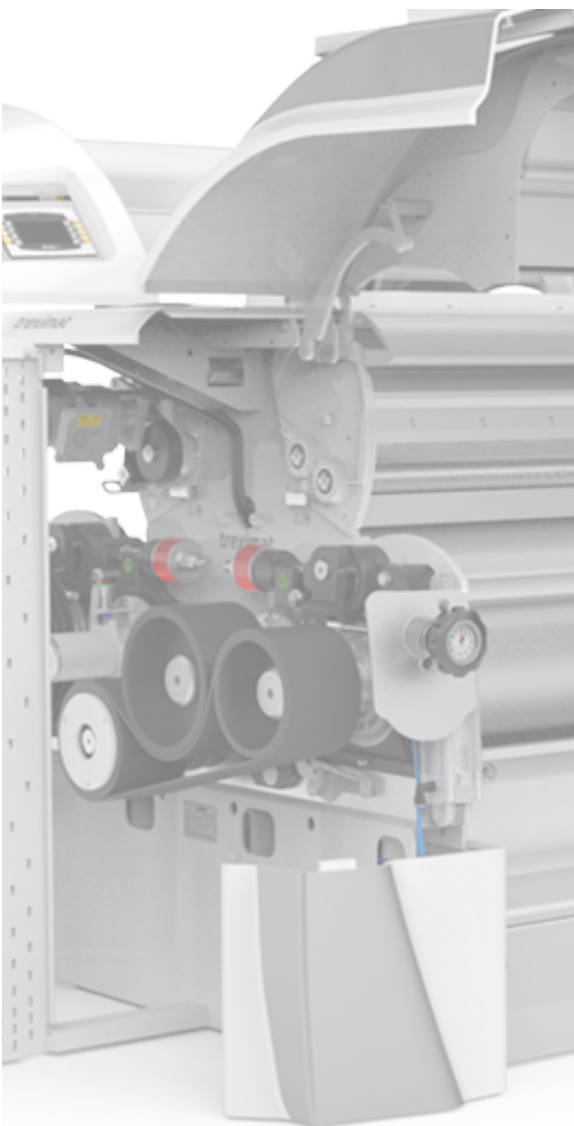


Spare Parts

CATALOGUE



Discover Quality



R O L L E R M I L L

About Us

InterMA International Engineering & Consulting Co. is a young company with 17 years of experience, follows strategic and technological developments and provides services by reflecting these to its customers. InterMA International Engineering & Consulting Co. also cooperates with many important brands in the sector.



We are rapidly approaching our goals with our dynamic, open-to-change and learning structure, always prioritizing the principles of honesty, respect, customer satisfaction, quick response to demands, affordable prices, transparency, teamwork, quality focus and free expression sharing. Our company works with determination, responsibility and passion to provide customer-oriented service; aims to make quality sustainable.



Diameter / Çap	Lenght / Uzunluk	Hardness / Sertlik
Roller Ø 250mm	600mm - 1500mm	Fluted 500 - 550 HB Smooth 430 - 480 HB
Roller Ø 300mm	600mm - 1500mm	Fluted 500 - 550 HB Smooth 430 - 480 HB



Product	Pneumatic Cylinder 63x120 Festo
Code	INT001

Product	Pneumatic Cylinder 63x120 Mag
Code	INT002

Product	Pneumatic Cylinder 40x60 Festo
Code	INT003



Product	Pneumatic Cylinder 40x60 Mag
Code	INT004

Product	Pneumatic Cylinder Repair Kit - 63-120 Festo
Code	INT005

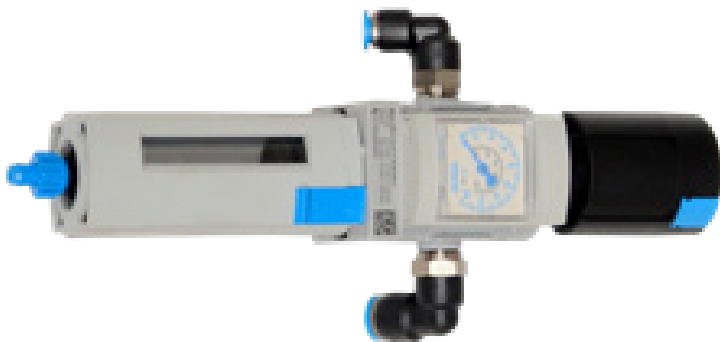
Product	Pneumatic Cylinder Repair Kit - 40-60 Festo
Code	INT006



Product	Single Coil Selenoid Valve
Code	INT007

Product	Double Coil Selenoid Valve
Code	INT008

Product	Pneumatic Valve Festo
Code	INT009



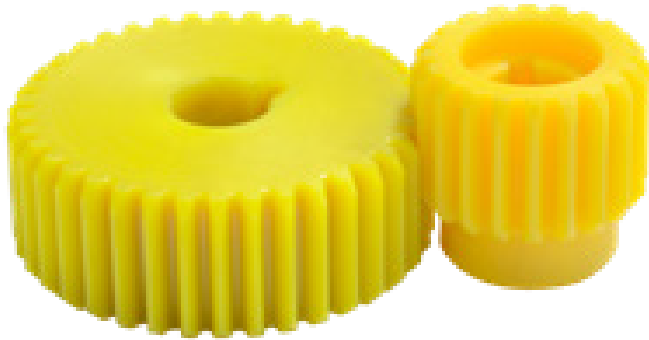
Product	Pneumatic Valve Parker
Code	INT010

Product	Air Regulator - Festo
Code	INT011

Product	Handwheel Gauge
Code	INT012



Product	Feed Roll Gear Set - Smooth
Code	INT013



Product	Feed Roll Gear Set - Fluted
Code	INT014



Product	Aluminium Felted Bearing Cover - Front
Code	INT015



Product	Aluminium Felted Bearing Cover - Back
Code	INT016



Product	Aluminium Felt Cover
Code	INT017



Product	Timing Pulley - Break
Code	INT018



Product	Timing Pulley - Smooth
Code	INT019



Product	Motor Pulley 360mm (5 Groove)
Code	INT020



Product	Handwheel
Code	INT021



Product	Handwheel Star Coupling
Code	INT022



Product	SKF Bearing 22315
Code	INT023



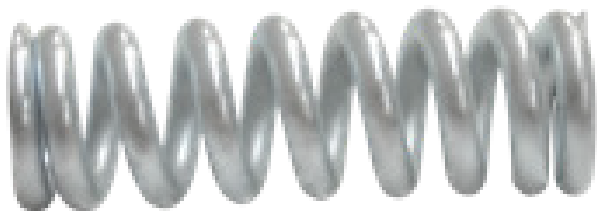
Product	SKF Bearing 6311
Code	INT024



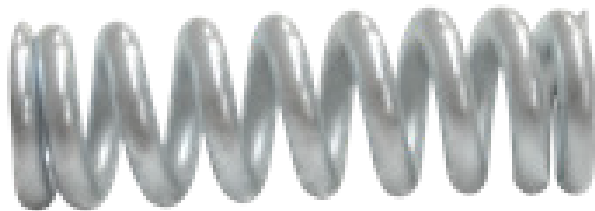
Product	SKF Bearing 1205
Code	INT025



Product	Rollermill Scrapper 600mm - 1500 mm
Code	INT026



Product	Spring Between Housing 250mm
Code	INT027



Product	Spring Between Housing 300 mm
Code	INT028



Product	Rollermil Brush 600mm - 1500mm
Code	INT029



Product	Timing Belt SKF 22x1765
Code	INT030



Product	Timing Belt SKF 26x1765
Code	INT031



Product	Timing Belt SKF 26x1981
Code	INT032



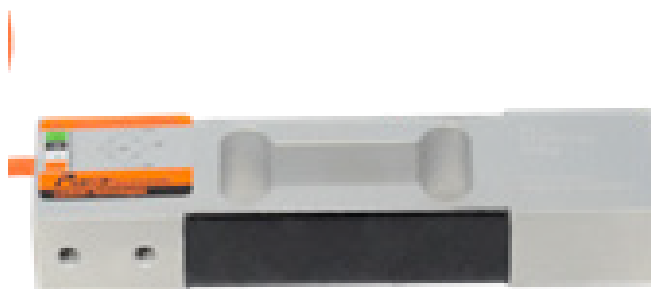
Product	Reducer Motor 0,75Kw
Code	INT033



Product	Control Panel - Beijer
Code	INT034



Product	Control Panel - Schneider
Code	INT035



Product	Loadcell
Code	INT036



Product	Schneider Speed Control Unit 0,75KW
Code	INT037



Product	Danfoss Speed Control Unit 0,75Kw
Code	INT038



Product	Roll Changing Apparatus
Code	INT039



Product	Roll Changing Trolley
Code	INT040



Product	Hydraulic Pump
Code	INT041



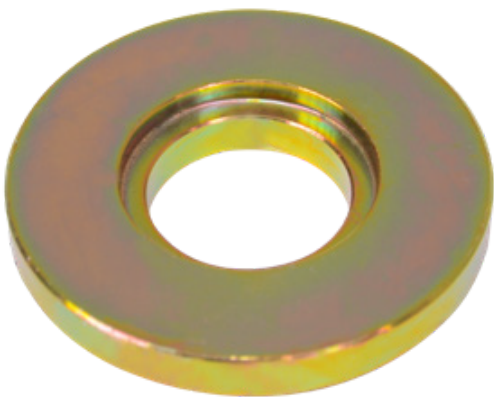
Product	Motor Belt (V-Belt)
Code	INT042



Product	Cover Hinge
Code	INT043



Product	Product Inlet Glass
Code	INT044



Product	Hub Shim
Code	INT045



Product	Ampermeter
Code	INT046



Product	Damper Spring
Code	INT047



Product	Feed Roll Spreader 600mm - 1500mm
Code	INT048



Product	Feed Roll Scraper 600mm - 1500mm
Code	INT049



Product	Feed Roll Fine Knurl 600mm - 1500mm
Code	INT050



Product	Feed Roll Coarse Knurl 600mm - 1500mm
Code	INT051



Product	Feed Roll Shaft 600mm - 1500mm
Code	INT052



Product	Feed Roll Pallet Shaft 600mm - 1500mm
Code	INT053



Product	Tension Shaft Set 250mm
Code	INT054



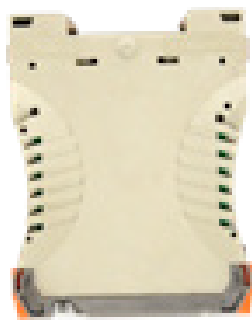
Product	Tension Shaft Set 300mm
Code	INT055



Product	Handwheel Shaft Set
Code	INT056

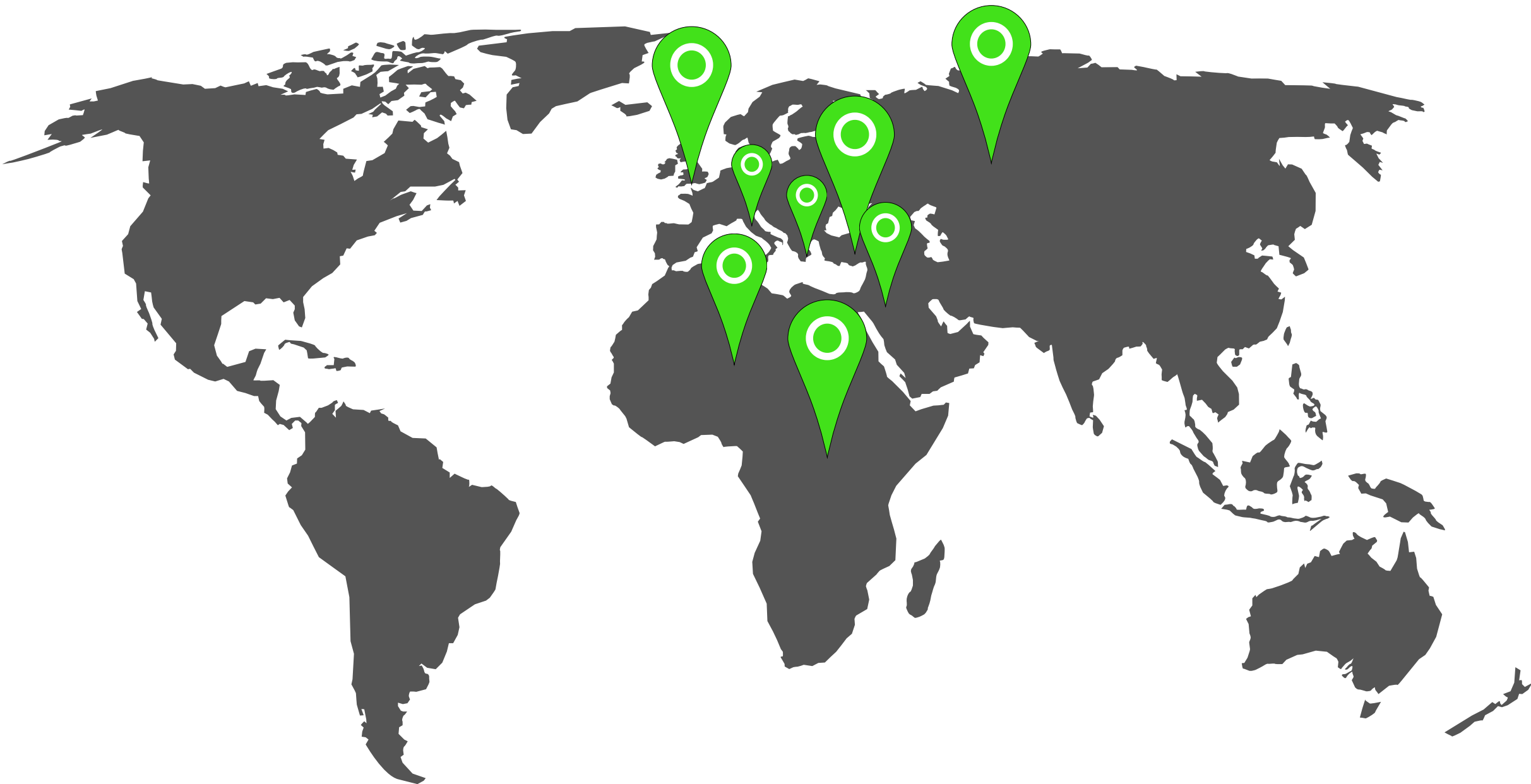


Product	Fatek Plc Set
Code	INT057



Product	Current Transmitter
Code	INT058

Product	Loadcell Transmitter
Code	INT059

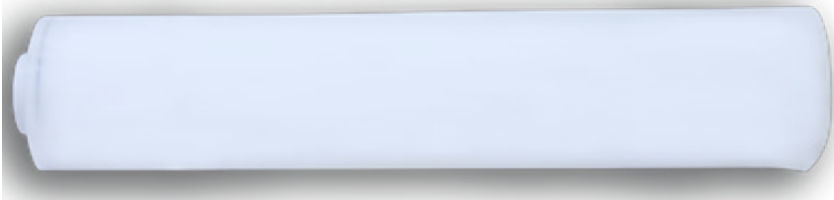


No matter where you are, our team is available for you...

Discover Quality



P L A N S E P A R A T O R



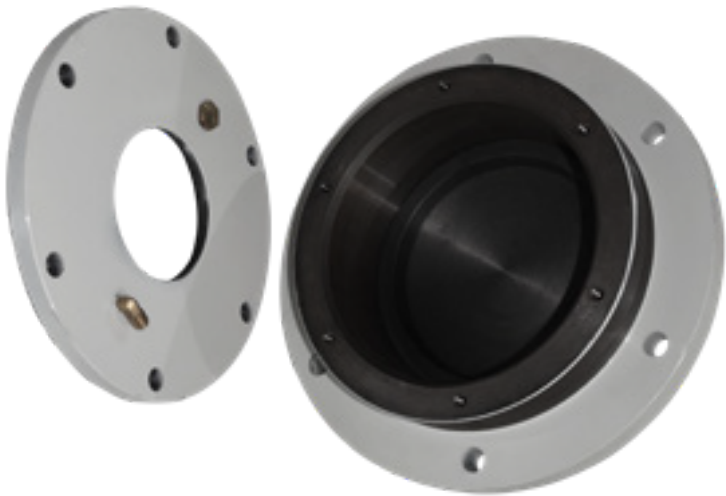
Product	Sefar Brand Silk - Requested Micron
Code	INT060



Product	Product Inlet Sleeve
Code	INT061



Product	Product Outlet Sleeve
Code	INT062



Product	Bottom Bearing Housing
Code	INT063



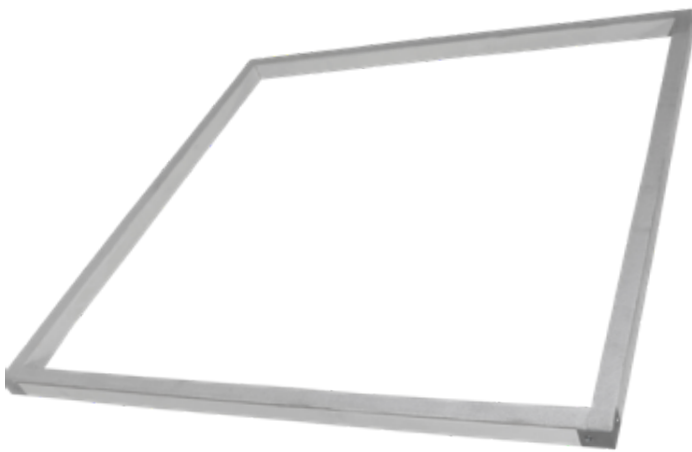
Product	Top Bearing Housing
Code	INT064



Product	Sieve Cleaner - Brush
Code	INT065



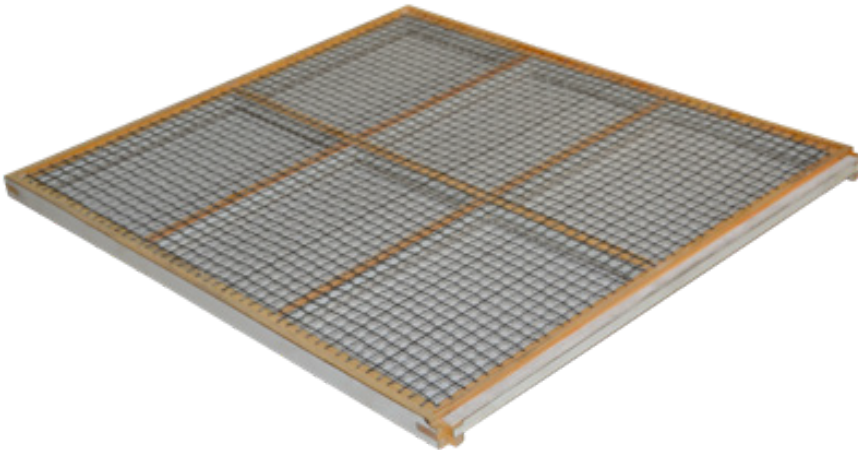
Product	Sieve Cleaner
Code	INT066



Product	Wooden Moulding
Code	INT067



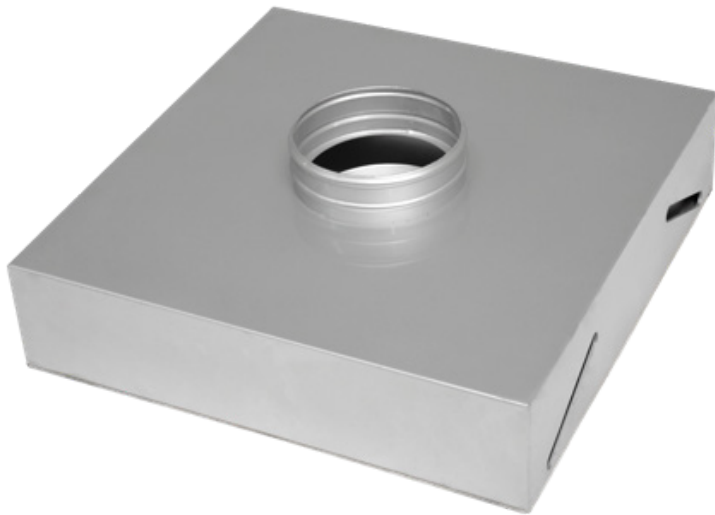
Product	Hanging Rod - 16mm
Code	INT068



Product	
Code	INT069

Product	Aluminium Frame
Code	INT070

Product	Wooden Frame
Code	INT071



Product	Wooden Bottom Frame
Code	INT072

Product	Double Inlet Top Compression
Code	INT073

Product	Single Inlet Top Compression
Code	INT074



Product	Motor V-Belt
Code	INT075

Product	Sieve Glue
Code	INT076

Product	Instant Activatoor
Code	INT077



Product	Cover Clamping Fixture
Code	INT078

Product	Compression Mechanism 74cm
Code	INT079

Product	Compression Mechanism 75cm
Code	INT080



Product	Compression Mechanism Slide - Pin
Code	INT081

Product	SKF Bearing 22326
Code	INT082

Product	SKF Bearing 22322
Code	INT083



Product	SKF Bearing 22318
Code	INT084

Product	Motor Pulley
Code	INT085

Product	Drive Pulley
Code	INT086



Product	Hanging Rod - 12mm
Code	INT087



Product	Cotton Sieve Cleaner
Code	INT088



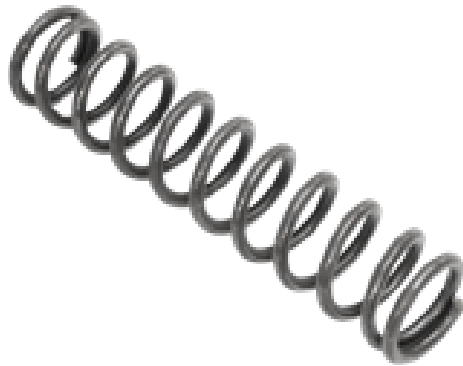
Product	Door Handle
Code	INT089



Product	Compression Rod
Code	INT090



Product	Compression Rod Nut
Code	INT091



Product	Compression Spring
Code	INT092

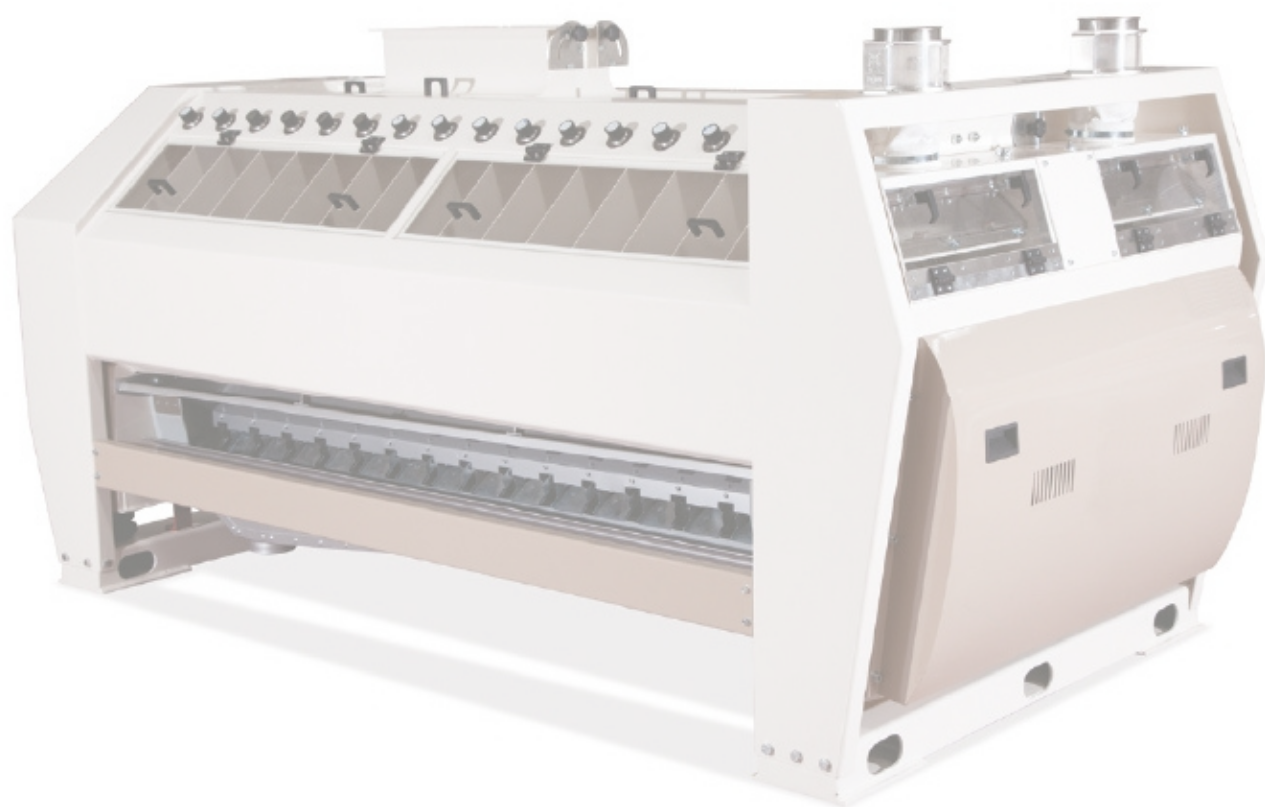


Product	Clamp
Code	INT093



Product	Sweeper
Code	INT094

Discover Quality



S E M O L I N A P U R I F I E R



Product	Vibro Motor
Code	INT095



Product	Vibration Chock
Code	INT096



Product	Aluminium Frame
Code	INT097



Product	Aluminium Compression Frame
Code	INT098



Product	Purifier Brush - Small
Code	INT099



Product	Purifier Brush - Big
Code	INT100



Product	Product Inlet Sleeve
Code	INT101



Product	Product Outlet Sleeve
Code	INT102



Product	Inspection Glass
Code	INT103



Product	Adjustment Wheel
Code	INT104



Product	Led Illumination
Code	INT105



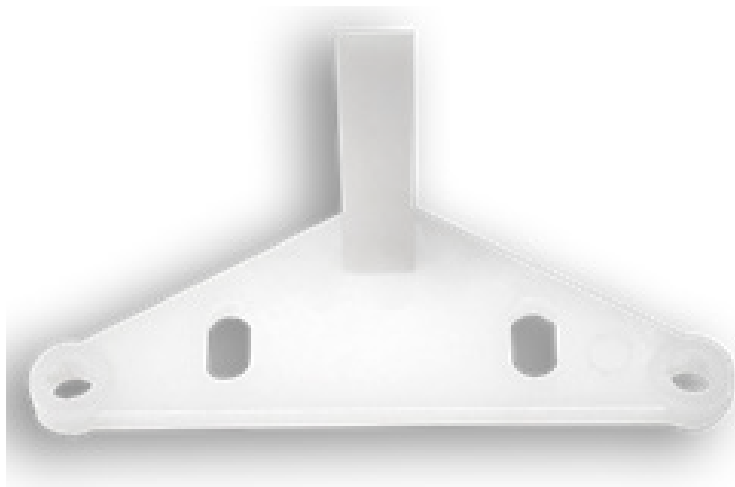
Product	On - Off Switch
Code	INT106



Product	Aluminium Frame Handle - Big
Code	INT107



Product	Aluminium Frame Handle - Small
Code	INT108



Product	Brush Reserver
Code	INT109



Product	U type Handle
Code	INT110



Product	Cover Hinge
Code	INT111



Product	Inspection Glass
Code	INT112

Discover Quality



J E T F I L T E R



Product	Diaphran Rubber
Code	INT113



Product	Diaphram Spring
Code	INT114



Product	Diaphram Cover
Code	INT115



Product	Pulse Valve
Code	INT116



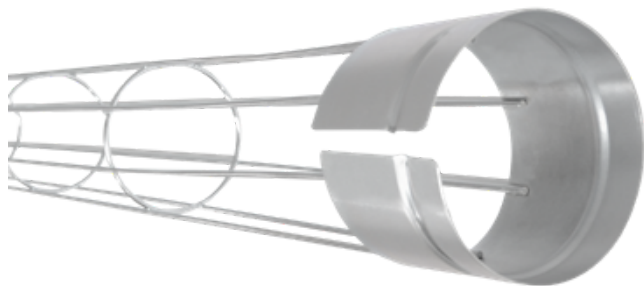
Product	Manometer
Code	INT117



Product	Air Hose
Code	INT118



Product	Filter Bag 120x2400mm
Code	INT119



Product	Filter Cage 120x2400mm
Code	INT120



Product	Filter Timer - Schneider
Code	INT121

Discover Quality



V I B R O B R A N F I N I S H E R



Product	Vibro Motor
Code	INT122



Product	Jacket Sieve
Code	INT123



Product	Motor Pulley
Code	INT124



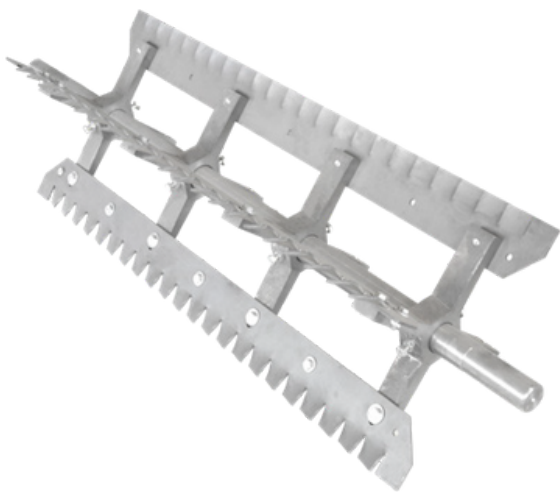
Product	Lid Lock
Code	INT125



Product	Lid Lock - Small
Code	INT126



Product	Inline Glass
Code	INT127



Product	Impeller
Code	INT128



Product	Housing
Code	INT129



Product	V Belt
Code	INT130



Product	Cover Hinge - Big
Code	INT131

Product	Cover Hinge - Small
Code	INT132

Product	Cover Handle
Code	INT133



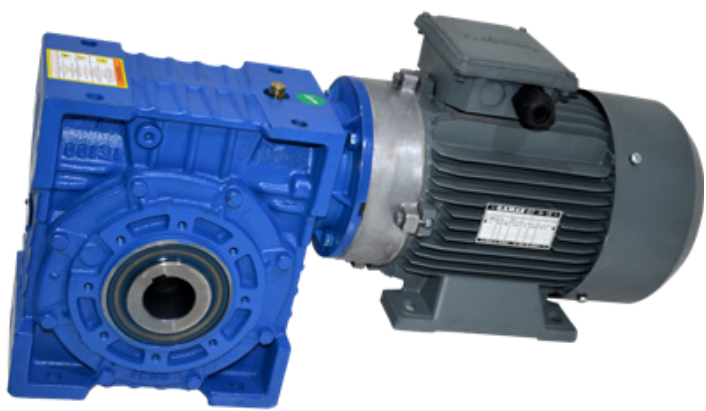
Product	Vibration Chock
Code	INT134

Product	Bearing - 23030
Code	INT135

Discover Quality



R A D I A L T A R A R



Product	Gear Motor
Code	INT137



Product	Housing
Code	INT138



Product	Drive Belt
Code	INT139



Product	V Belt
Code	INT140



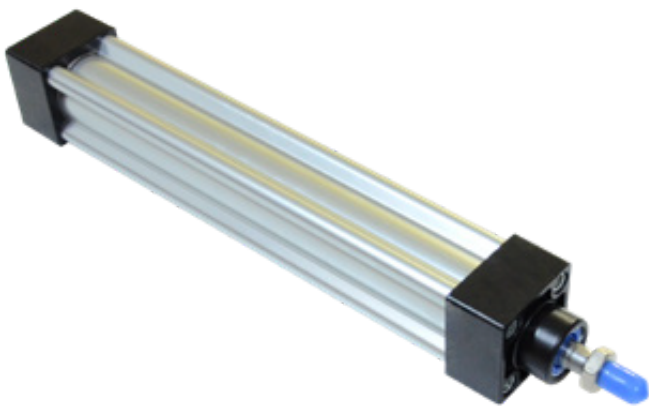
Product	Bearing - 6008
Code	INT141



Product	Rubber Bush
Code	INT142



Product	Selonoid Valve
Code	INT143



Product	Pneumatic Cylinder
Code	INT144



Product	Regulator
Code	INT145



Product	Cover Handle
Code	INT146



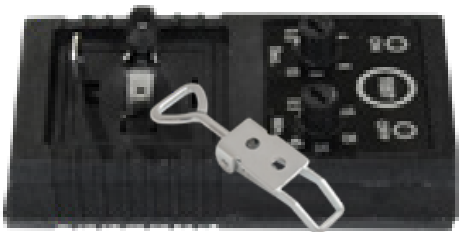
Product	Spring Bellow
Code	INT147



Product	Rubber Plug
Code	INT148



Product	Lid Lock
Code	INT149



Product	Timing Relay
Code	INT150



Product	Lid Lock
Code	INT151



Product	Rubber
Code	INT152

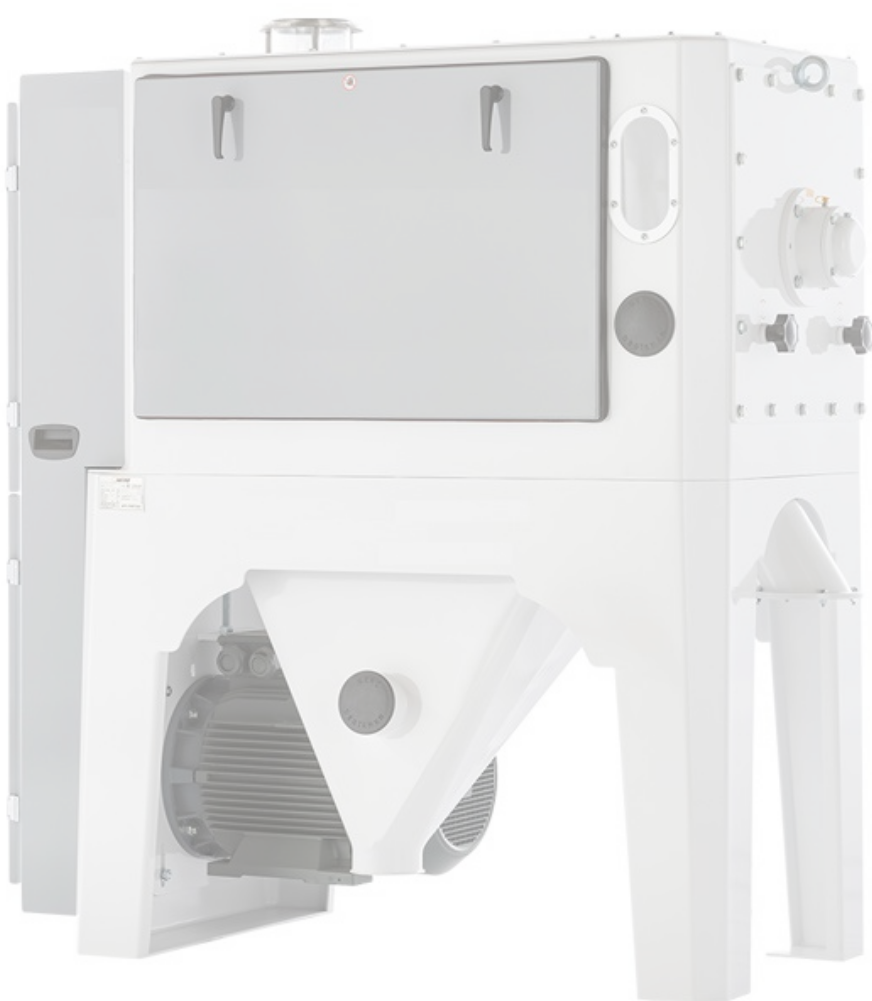


Product	Adjusting Wheel
Code	INT153



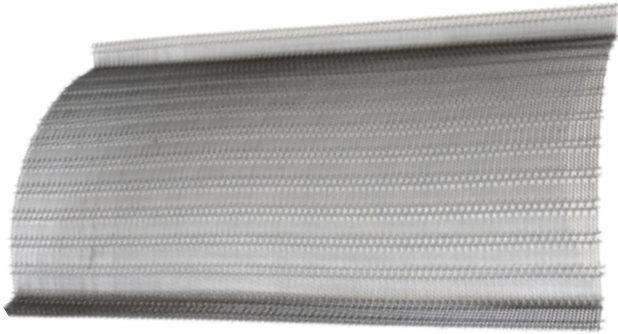
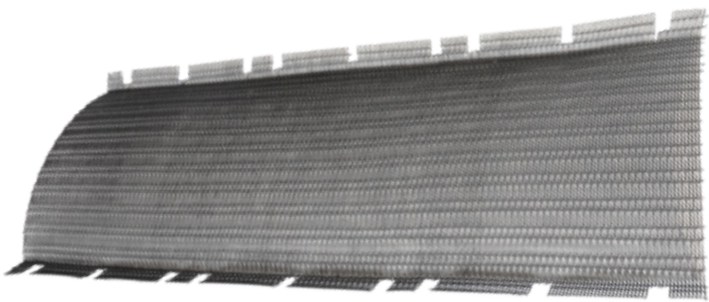
Product	Adjusting Plate
Code	INT154

Discover Quality



HORIZONTAL SCRUBBER

HORIZONTAL SCOURER



Product	Screen
Code	INT155

Product	Screen
Code	INT156

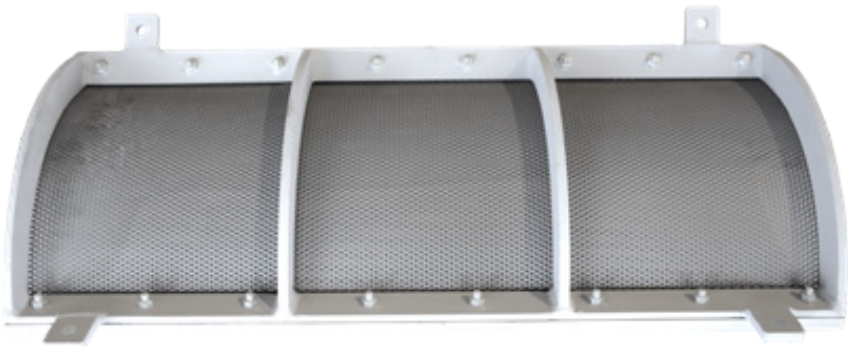
Product	Rotor Pallet
Code	INT157



Product	Rotor Pallet
Code	INT158

Product	Body Pallet
Code	INT159

Product	Body Pallet
Code	INT160



Product	Jacket With Frame
Code	INT161

Product	Jacket With Frame
Code	INT162

Product	Rotor Pulley
Code	INT163

HORIZONTAL SCOURER



Product	Rotor Pulley
Code	INT164



Product	Bearing - 22213
Code	INT165



Product	Bearing
Code	INT166



Product	Lid Lock
Code	INT167



Product	Flap Spring
Code	INT168



Product	Motor Pulley
Code	INT169



Product	V - Belt
Code	INT170

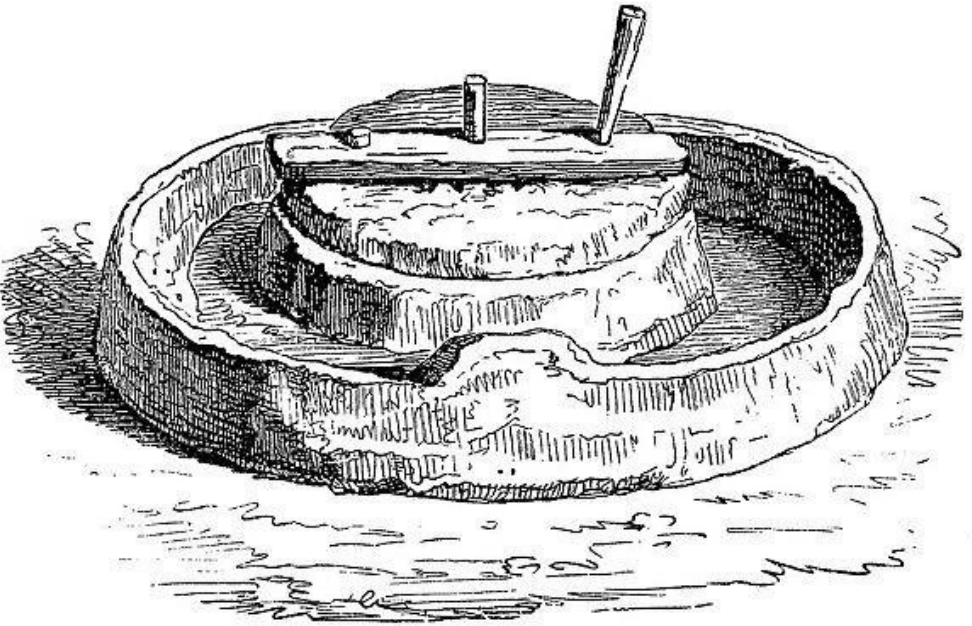
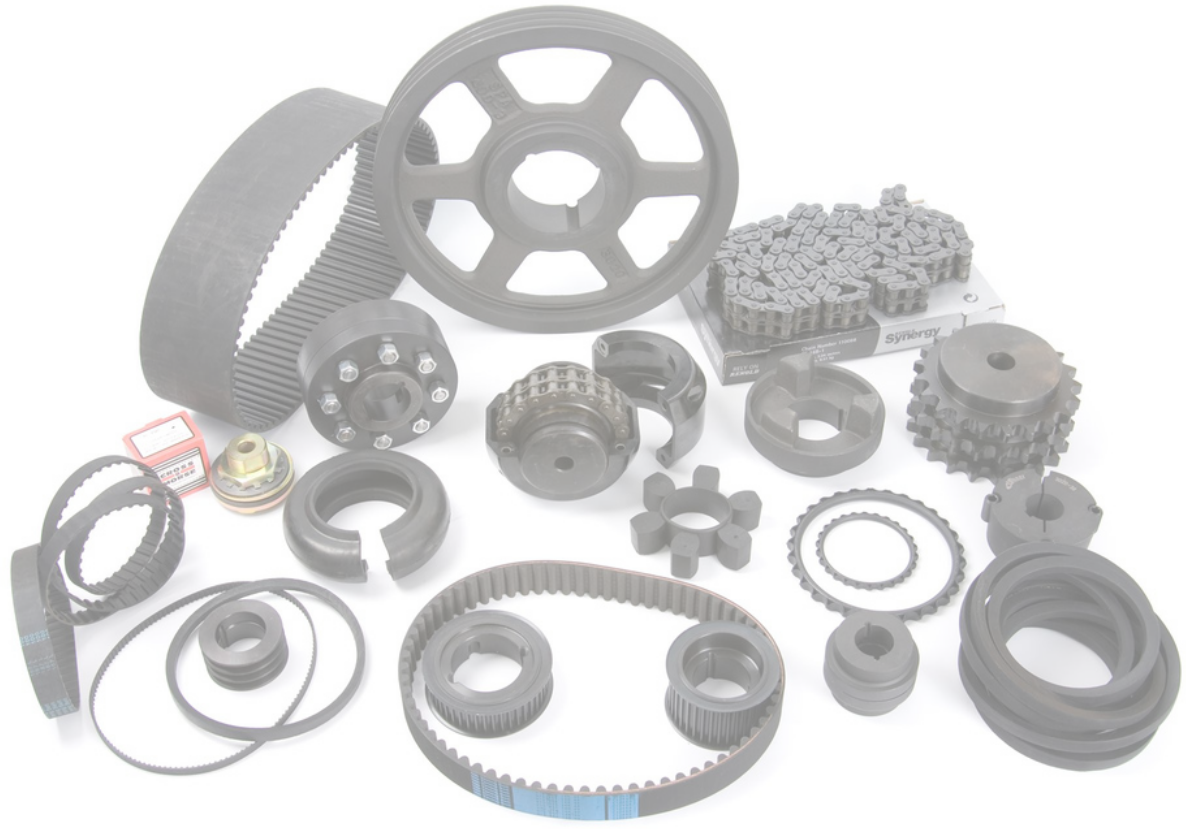


Product	V-Belt
Code	INT171



Product	Bearing Cover
Code	INT172

Discover Quality



O T H E R S P A R E P A R T S

OTHER PARTS



Product	Elevator Bucket
Code	INT173



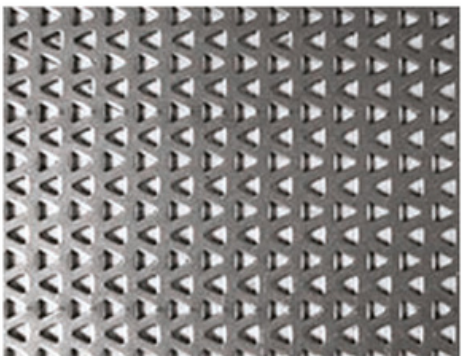
Product	Elevator Belt
Code	INT174



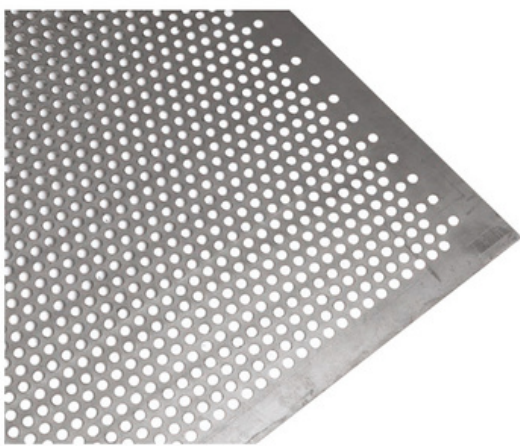
Product	Sight Glass
Code	INT175



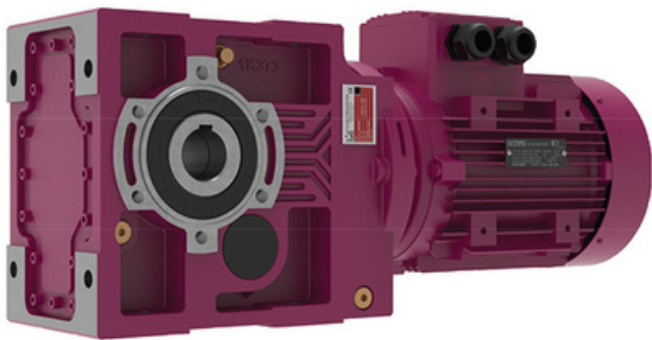
Product	Sight Glass Rubber
Code	INT176



Product	Triangular Hole Sheet
Code	INT177



Product	Round Hole Sheet
Code	INT178



Product	Reducer Motor / Gear Motor Yilmaz - Sew
Code	INT179



Product	Electrical Motor Abb /Siemens / Gamak / Omega
Code	INT180



Product	Vibro Motor Kemp / Visam / Italvibras
Code	INT181

Work with Us

In order to see our solutions,
quality, you just need to register
InterMA to your “Vendor List”



www.interma.com.tr



Phone Number +90 542 3705323



Email Address sales@interma.com.tr



Address : Yavruturna Mah. Kulaksız
Sokak No:27-14 Corum / Turkey

